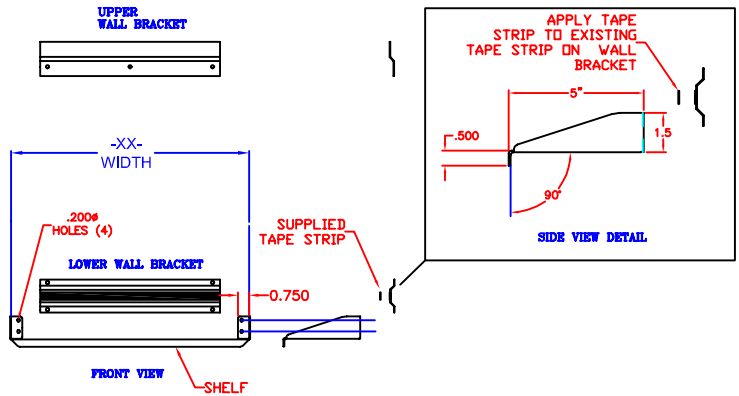
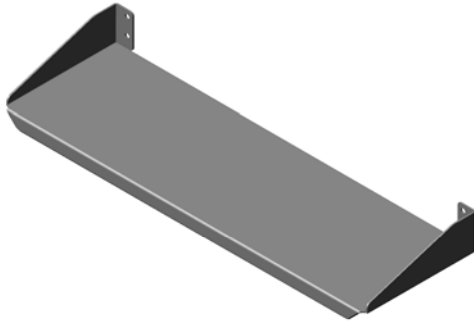




Technical Data K-4032-XX-SS

CONCEALED MOUNT MIRROR SHELF

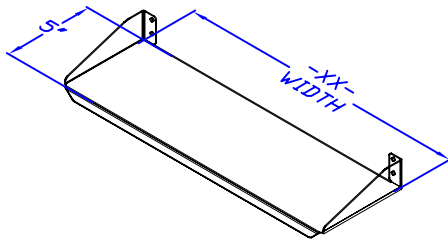
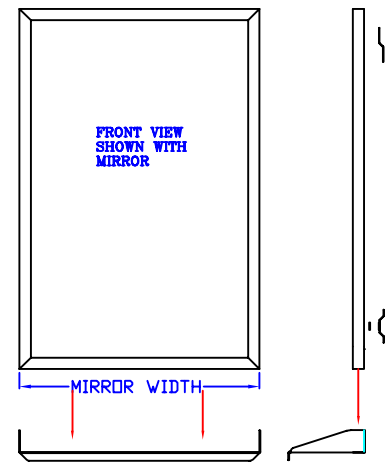


PART NUMBER	SHELF WIDTH
-XX-	
K-4032-16-SS	16"
K-4032-18-SS	18"
K-4032-24-SS	24"

PART NUMBER IS FOR SHELF ONLY.

NOTE: CAN BE USED AS A SHELF WITHOUT THE MIRROR. (EXPOSED MOUNTING)

CUSTOM SHELF DEPTH AND WIDTH IS AVAILABLE UPON REQUEST WHEN USED AS JUST A SHELF. CALL FOR PRICING AND AVAILABILITY.



Construction:

- 16 GAUGE TYPE 304 STAINLESS STEEL
- ONE PIECE CONSTRUCTION WITH INTEGRAL SIDE BRACKETS AND $\frac{1}{4}$ " MOUNTING HOLES
- CONCEALED MOUNTING WHEN USED WITH A BREY-KRAUSE MIRROR
- EXPOSED MOUNTING WHEN USE AS A SHELF WITHOUT THE MIRROR
- SATIN #4 FINISH
- $\frac{3}{8}$ " FRONT LIP

Installation:

- SHELF MUST BE MOUNTED BEFORE MIRROR IS PERMANENTLY MOUNTED. MARK LOWER POSITION OF MIRROR. POSITION SHELF WITH SHELF SURFACE JUST BELOW THE MARK MADE IN PERVIOUS STEP AND FASTEN TO WALL. APPLY EXTRA TAPE STRIP ON TOP OF EXISTING TAPE STRIP ON THE LOWER WALL BRACKET. INSTALL MIRROR PER MIRROR INSTRUCTIONS WITH SHELF BRACKETS BEHIND MIRROR.
- WHEN USED AS A SHELF WITHOUT MIRROR, USE SHELF AS TEMPLATE TO LOCATE AND DRILL HOLES.
- FASTEN TO WALL.
- DISCARD EXTRA TAPE STRIP.

Guide Specification:

5/8" DEEP X 16 GAUGE TYP 304 STAINLESS STEEL SHELF.
ONE PIECE CONSTRUCTION WITH INTEGRAL SIDE BRACKETS.
SATIN #4 FINISH.
CONCEALED MOUNT WHEN USE WITH A BREY-KRAUSE MIRROR.
EXPOSED MOUNT WHEN USED WITHOUT THE MIRROR.

The manufacturer reserves the right to make changes in design and material without formal notice and without incurring obligation

© Copyright 2005
Brey-Krause Manufacturing

Brey-Krause Manufacturing
1209 West Lehigh Street, Bethlehem, PA 18018
Phone: 610.867.1401 Fax: 610.866.1433
www.breykrause.com