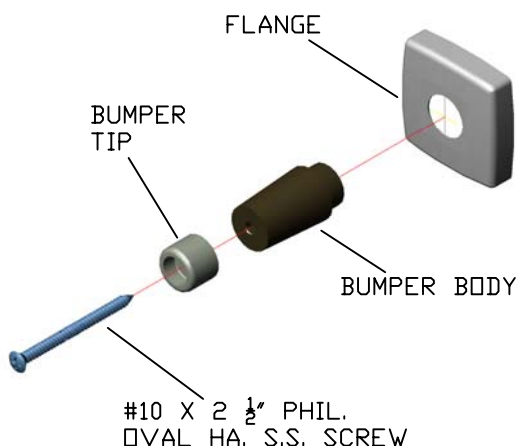
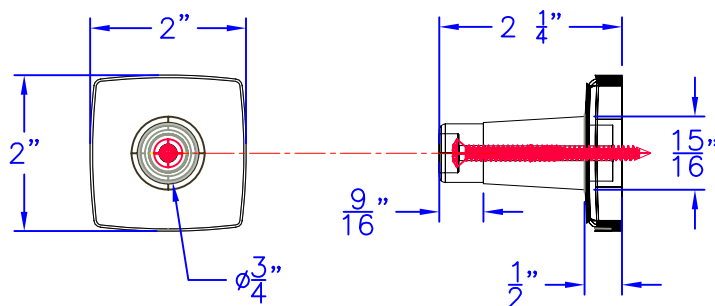
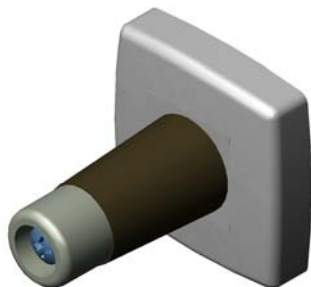




Technical Data

S-4947-XX

DOOR BUMPER



FINISHES:

- SS SATIN STAINLESS
- BS BRIGHT STAINLESS
- PC POWDER COAT (SPECIFY COLOR)

NOTE: FINISHES ONLY APPLY TO FLANGE

Construction:

FLANGE: 22 GAUGE TYPE 304 STAINLESS STEEL.
BUMPER: BLACK RUBBER FASTEN TO FLANGE WITH SCREW.
MOUNTING SCREW: #10 X 2 1/2" PHIL. OVAL HD. STAINLESS STEEL.
FINISHES AS NOTED.

Installation:

INSERT SCREW INTO BUMPER TIP.
ASSEMBLE BUMPER TIP WITH BUMPER BODY INTO FLANGE AND SCREW TO WALL USING PROVIDED SCREW.

CAUTION: UNIT IS ONLY AS STRONG AS THE ANCHORING DEVICES AND THE WALL ON WHICH IT IS MOUNTED TO.

Guide Specification:

DOOR BUMPER.
STAINLESS STEEL FLANGE- IN FINISHES INDICATED.
2 1/4" PROJECTION.