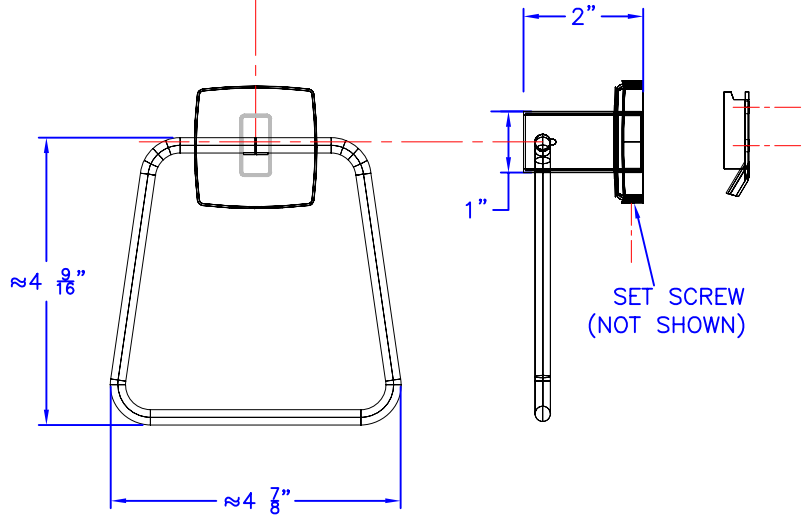
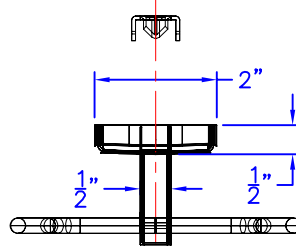
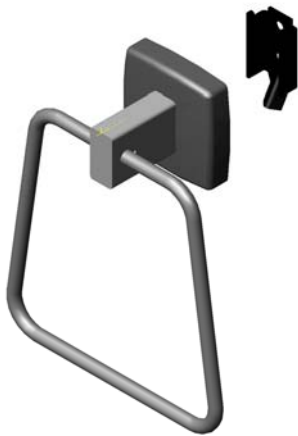




Technical Data

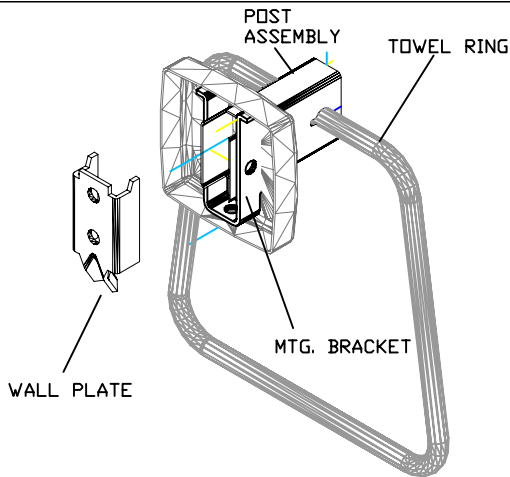
S-4944-XX

TOWEL RING



FINISHES:

- SS SATIN STAINLESS
- BS BRIGHT STAINLESS
- PC POWDER COAT (SPECIFY COLOR)



Construction:

- POST ASSEMBLY: 22 GAUGE TYPE 304 STAINLESS STEEL
- WALL PLATE: 16 GAUGE TYPE 304 STAINLESS STEEL
- MOUNTING BRACKET: 16 GAUGE TYPE 304 STAINLESS STEEL
- TOWEL RING: 1/4" Ø 303 STAINLESS STEEL SOLID ROD
- SET SCREW: 8-32 X 5/16"
- MOUNTING SCREWS: #8 X 1 1/4" PHIL. PAN HD. ZINC PLATE
- FINISHES AS NOTED.

Installation:

- FASTEN WALL PLATE.
- TILT POST ASSEMBLY UP SLIGHTLY AND ENGAGE OVER WALL PLATE AND PUSH DOWN TO LEVEL. (SET SCREW HOLE AND POST SEAM ARE TOWARDS FLOOR OR DOWN)
- THREAD SET SCREW THROUGH POST FLANGE AND MOUNTING BRACKET UNTIL TIGHT.

CAUTION: UNIT IS ONLY AS STRONG AS THE ANCHORING DEVICES AND THE WALL ON WHICH IT IS MOUNTED TO.

Guide Specification:

- TOWEL RING.
- CONCEALED MOUNTING SYSTEM.
- FABRICATED FROM TYPE 300 SERIES STAINLESS STEEL.

The manufacturer reserves the right to make changes in design and material without formal notice and without incurring obligation

© Copyright 2005
Brey-Krause Manufacturing

Brey-Krause Manufacturing
1209 West Lehigh Street, Bethlehem, PA 18018
Phone: 610.867.1401 Fax: 610.866.1433
www.breykrause.com